

Dramix® 3D

65/50BG

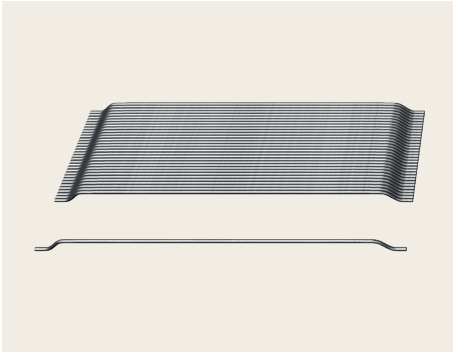
Aspect ratio

Length

Bright

Glued

Concrete Reinforcement



Original anchorage

Dramix® 3D is the cost-efficient fiber for standard statically indeterminate concrete structures that are subjected to regular static, fatigue and dynamic loadings.

Glue technology for three-dimensional reinforcement

Dramix® steel fibers are bundled with water-soluble glue. The glue helps to avoid fiber balling during mixing and ensures a homogeneous distribution of fibers throughout the concrete mix.

Material properties

Nom. tensile strength:

178 ksi (1,225 MPa)

Young's modulus:

30,458 ksi (210,000 MPa)

Strain at ultimate strength:

0.8 %

Fiber network

2,541 fibers/lb (5,602 fibers/kg)

Geometry

Fiber family



Length (l) * / Diameter (d)

← 2.0 in. (50 mm) →



Aspect ratio (l/d) * : 65

* Indicative value

Packaging

BAGS:

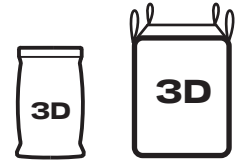
44 lb

(20 kg)

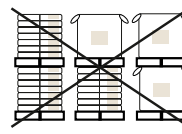
BIG BAG:

2,425 - 2,645 lb

(1,100 - 1,200 kg)



Handling



NO STACKING



KEEP DRY

Product certificates*



System certificates*

Dramix® plants are ISO 9001 and ISO 14001 certified.



Product conformity

Dramix® conforms to ASTM A820, EN 14889-1 and ISO 13270 Class A.

Contact us:

For inquiries and orders on www.construction.bekaert.com/contact



For recommendations on stacking, handling, dosing and mixing, visit www.bekaert.com/dosingfibers

Any other specific document or certificate can be found on www.construction.bekaert.com/resources

* Product and system certificates are plant specific.