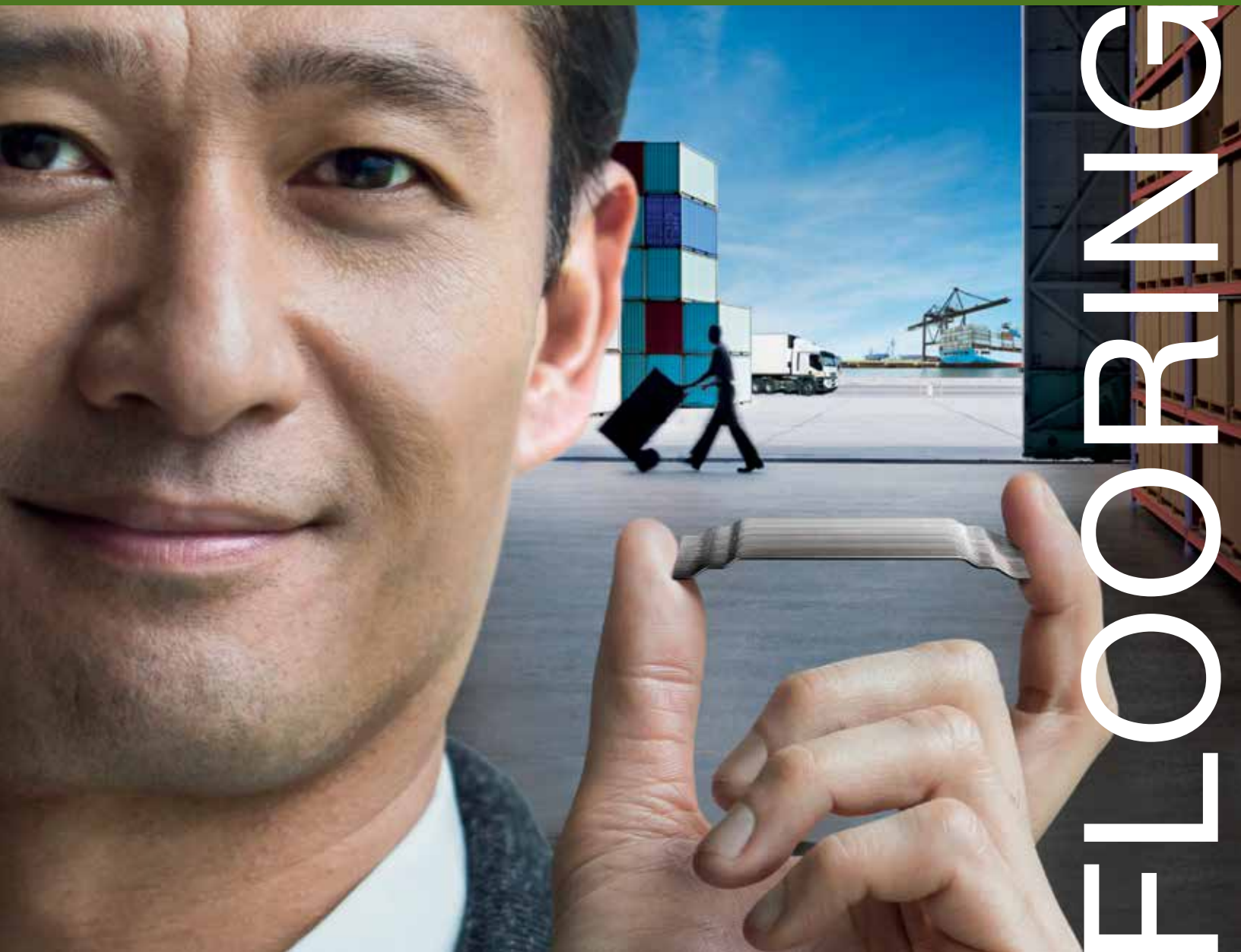


# Dramix®

 **BEKAERT**

better together

Reinforcing your industrial floors



REINFORCING  
FLOORING



**Shaping**

**the future**

**of concrete**

**industrial floors**



“

‘Modern-day warehouses have become very demanding environments. Floors are a critical element to ensure safe and efficient operation. That’s why we opt for jointless fiber-reinforced floors in all the warehouses we build all over the world.’

‘The Dramix® steel fibers in particular offer a strong answer to the challenge of crack control, enabling us to reduce maintenance for our floors and create more durable and environmentally friendly warehouses.’

- 07 New possibilities for steel fiber floors
- 08 All future floors will have steel fibers
- 11 The ultimate range of Dramix® fibers
- 13 Standard floors and hardstands
- 14 Saw-cut floors and bonded overlays
- 15 Jointless floors
- 17 High serviceability floors
- 18 Seamless floors
- 19 Liquid tight floors

- 20 Thin jointless (renovation) floors
- 21 Coated floors
- 22 High serviceability pavements
- 25 Structural floors
- 26 Industrial floors on piles
- 28 Industrial mat slabs
- 30 Rack supported building
- 33 Reinforcing your knowledge
- 34 Reinforcing your world

Gregory Loësel,  
Director Project Management  
Prologis France, Southern Europe



## A world of new possibilities for steel fiber floors



### Every floor has its needs

Every industrial floor has its own very specific needs. From the liquid-impermeable surfaces in the chemical industry to the foundations for high-tech rack supported buildings, modern floors play a crucial role in ensuring safe and efficient operation. The new Dramix® range of steel fibers provides you with the right solution for the reinforcement of any type of floor.

#### STANDARD indoor industrial floors and hardstands

<b>Saw cut floors</b>	<b>14</b>
<b>Bonded overlays</b>	<b>14</b>
<b>Jointless floors</b>	<b>15</b>

#### HIGH SERVICEABILITY industrial floors

<b>Seamless floors</b>	<b>18</b>
<b>Liquid tight floors</b>	<b>19</b>
<b>Thin jointless (renovation) floors</b>	<b>20</b>
<b>Coated floors</b>	<b>21</b>

#### HIGH SERVICEABILITY pavement

<b>Heavy-duty outdoor pavement</b>	<b>22</b>
------------------------------------	-----------

#### STRUCTURAL industrial floors

<b>Floors on piles</b>	<b>26</b>
<b>Industrial mat slabs</b>	<b>28</b>
<b>Rack supported buildings</b>	<b>30</b>
<b>Seismic floors</b>	<b>30</b>

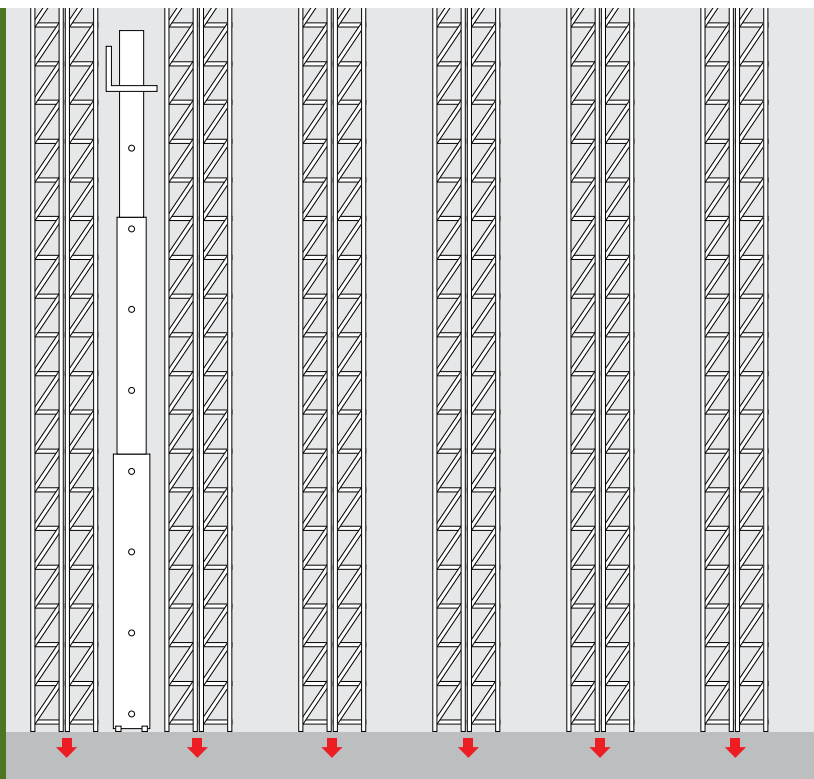
# Four reasons to have all future floors with steel fibers

## A multidimensional network reinforces your floor

Reinforcing your industrial floors with steel fibers has many advantages. Since the fibers are evenly distributed throughout the concrete, every part of your floor is actively reinforced—at the top layer, in the core, at the sides, at the bottom. No matter what forces are working on your floor, no matter how strong they are, the fibers are always in exactly the right place to do their job.

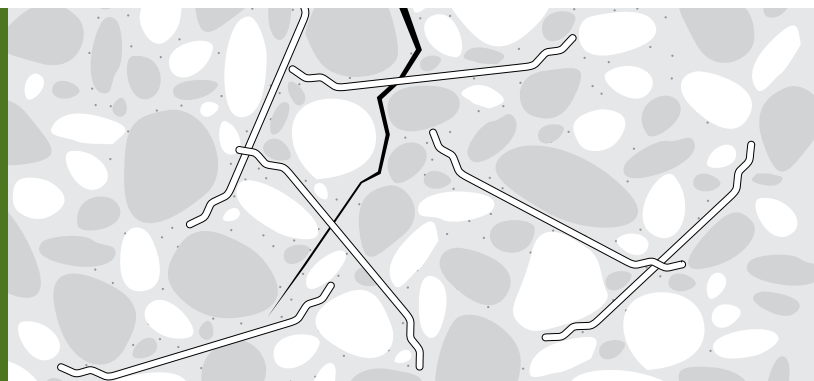
### 1 Optimal load bearing

Steel fibers reinforce your floor throughout the concrete slab. No matter where the load is placed or where the stresses occur, optimal load bearing is always guaranteed, avoiding deformation and damage.



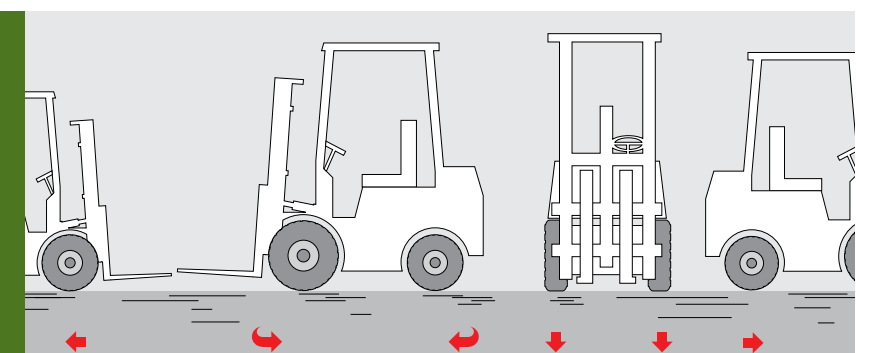
### 2 Optimal crack control

Steel fibers ensure optimal control of even the smallest cracks in your concrete floors—ensuring safe and efficient operations at all times. They also enable you to create liquid tight floors that comply with the most stringent safety and environmental requirements.



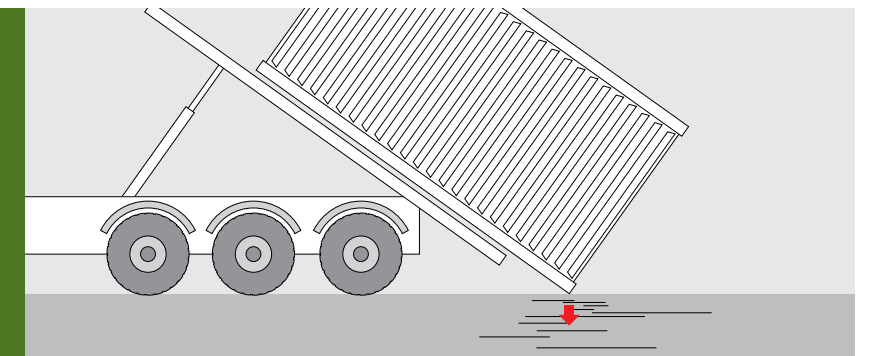
### 3 High fatigue resistance

Fiber floors offer a higher fatigue resistance than traditional reinforcement methods. They reduce maintenance and repair costs in even the most demanding and heavy-duty environments, and make longer lifespans a reality.



### 4 High impact resistance

Fiber floors are better equipped to resist impact, keeping the surface of your industrial floors intact and ensuring smooth operations.



## Get more out of your floor

### Easier to maintain

Optimized crack control means fiber floors are easier to maintain, since the floor structure is more resistant to wear and tear.

### Longer lifespan

Thanks to high fatigue and impact resistance, fiber floors enjoy a longer lifespan, while minimizing the need for repairs.

### Better performance

Steel fibers enable you to get the best out of your floor—heavier loads, more efficient operations, increased safety, better environmental performance.

### Optimized thickness

Steel fiber reinforcement enables you to optimize the thickness of your concrete floors, while safeguarding performance and durability.

### Timesaving construction

Using steel fibers for reinforcement saves time and money during construction.

## The ultimate range of Dramix® fibers

Bekaert offers you a complete range of steel fibers for the concrete reinforcement of industrial floors. Every fiber has been specifically engineered to provide the right solution for all of your applications, from standard industrial floors to the most demanding applications.



### Standard floors

#### A proven concept for cost-efficient industrial floors

Over the years, the Dramix® 3D steel fibers have proven to be the most cost-efficient solution for the reinforcement of standard industrial floors. Mesh is no longer necessary when steel fibers save time during construction, delivering excellent performance and durability, along with optimized crack control.



### High serviceability floors

#### For the highest hygiene and safety requirements

The Dramix® 4D series has been designed with the highest serviceability in mind. It enables you to meet the most demanding hygiene, safety, and environmental requirements. The 4D is also the recommended solution for combined reinforcement, giving you the most cost effective and efficient liquid tight solution.



### Structural floors

#### Unseen levels of performance

The unique capabilities of the Dramix® 5D series enable you to use fiber-only reinforcement in a wide range of new applications including structural floors, extremely demanding environments, and high-tech applications such as rack supported buildings and industrial floors on piles.

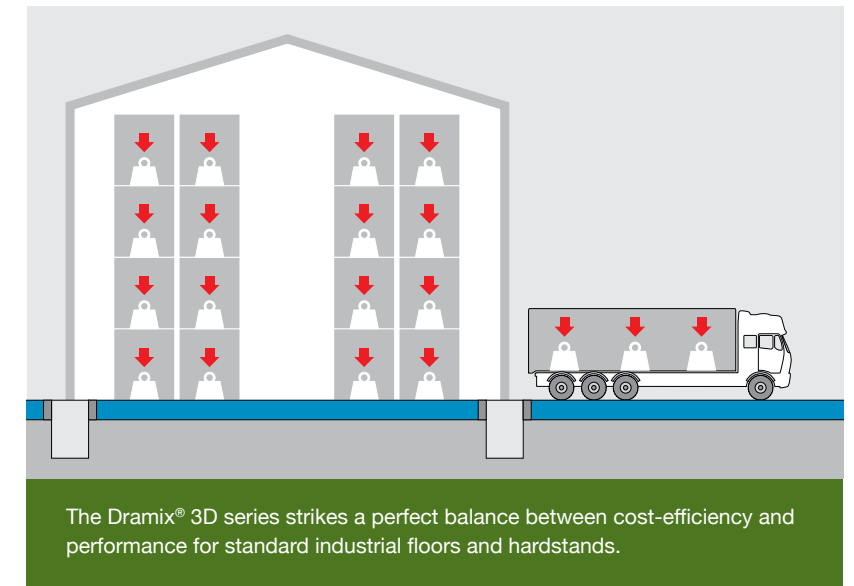


# 3D<sup>®</sup> Dramix

## Standard floors and hardstands

### The perfect balance between cost-efficiency and performance

The 3D series is a robust reinforcement solution for industrial floors that are independent of the building structure, with regular load-bearing requirements and dynamic loadings. The 3D fibers offer excellent performance and durability without having to rely on more expensive and time-consuming traditional reinforcement solutions. At the same time, the thickness of the concrete slab can be optimized, enabling further saving on material and construction costs.



### Designed for:

- > Standard floors and hardstands
- > Saw-cut floors and bonded overlays
- > Jointless floors



## Saw-cut floors and bonded overlays

## Jointless floors



- > Production halls
- > Light-trafficked warehouses
- > Bulk storage

431,000 ft<sup>2</sup> (40,000 m<sup>2</sup>), Fort Stewart US Army Base, USA



- > Distribution centers
- > High-bay warehouses
- > Cold-storage rooms

754,000 ft<sup>2</sup> (77,000 m<sup>2</sup>), Amazon.co.uk

### Solid and cost-efficient fiber floors

The Dramix® 3D series provides you with the most cost-efficient solution for solid, durable, and virtually maintenance-free saw-cut floors. Mesh—or any other traditional reinforcement method—is no longer needed to build a long-lasting floor, saving time and money during construction. The excellent performance of the 3D steel fibers also enables you to optimize the thickness of your floors, and the amount of fibers needed for reinforcement.

### Bonded overlays

Dramix® 3D also provides you with the ultimate solution for the repair of your floors should they ever need it: a thin overlay of steel fiber concrete duplicating the existing saw-cuts.

### For intensive and specific usage

The Dramix® 3D series enables you to build jointless and super-flat floors for high-intensity traffic and high-bay warehouses in the most cost-efficient manner without the use of mesh and with a minimum thickness of concrete. Because of its excellent performance in impact resistance and crack control, the 3D series also offers a cost-efficient solution for more demanding applications such as cold-storage rooms.



# 4D<sup>®</sup> Dramix



## Designed for:

- > Seamless floors
- > Liquid tight floors
- > Thin jointless (renovation) floors
- > Coated floors
- > High serviceability pavement

## High serviceability floors

### For the highest serviceability requirements

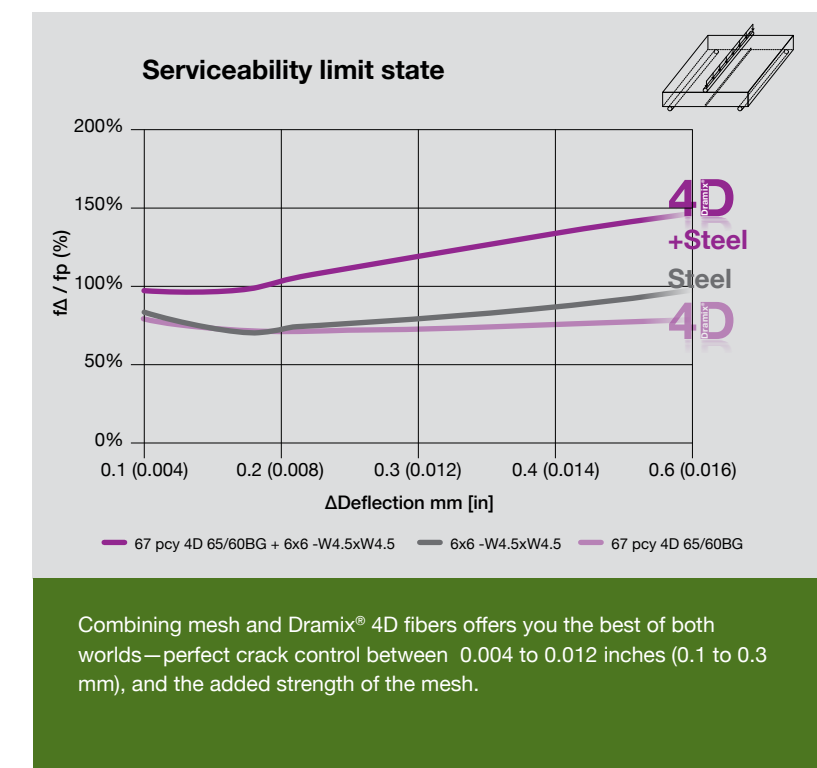
Regular industrial floors are most often designed according to anticipated load requirements. Serviceability specifications are generally met with subsequent detailing and execution. However, there are floors with higher serviceability requirements where additional consideration of a stringent crack control is mandatory, and the traditional way of constructing can't either be applied or is not sufficient to meet the requirements. This is particularly the case for seamless floors in the chemical and food industries or wherever a fluid tight floor and/or specialty coating is requested. Special requirements for serviceability of floors typically lead to high levels of traditional reinforcement. Dramix<sup>®</sup> 4D fibers in combination with a single top layer of steel fabric (mesh) fulfill the serviceability requirement in a very effective, cost, and timesaving manner. Tight crack width limitations along with load considerations can be solved with a combined solution. Traditional reinforcement is largely replaced by the addition of 4D fibers.

### Control of even smallest cracks

The Dramix<sup>®</sup> 4D fibers have been engineered with special regard for controlling the smallest crack widths immediately. Their greatest effectiveness occurs in the range of 0.004 to 0.012 inches (0.1 to 0.3 mm) in order to meet high requirements in the serviceability limit state of floors. High durability and impermeable floors are achieved in all of those special flooring applications in which hygiene and environmental safety take priority and demands special considerations.

### Ideal solution for combined reinforcement

Steel fibers of the Dramix<sup>®</sup> 4D family are the ideal solution for combined reinforcement (steel fibers along with traditional reinforcement). Including 4D steel fibers in a concrete mix makes it possible to replace a considerable amount of conventional reinforcement in order to achieve the same or even a lower crack width limitation compared to a highly reinforced traditional solution. Our 4D steel fibers immediately pick up stresses at smallest crack width and simultaneously provide the highest performance level at small cracks. Along with traditional reinforcement, an ideal solution is provided to assure for highest serviceability and crack control for cracks in the range of 0.004 to 0.012 inches (0.1 to 0.3 mm).



## Seamless floors

## Liquid tight floors



- > Distribution centers
- > High-bay warehouses
- > Cold-storage rooms
- > Scrap yards



- > Food industry
- > Chemical industry
- > Petrochemical industry

### NEW Completely joint-free floor surfaces

All joint troubles are now a thing of the past. Thanks to Dramix® 4D we can create 431,000 ft<sup>2</sup> (40,000 m<sup>2</sup>) warehouses without any joints or expansion joints.

#### Large surfaces, intensive use, no joints

Seamless industrial floors are increasingly replacing jointless floors as the industry standard for traffic intensive and high bay warehouses. Whereas jointless floors still have expansion joints every 130 feet (40 meters) or less, seamless floors have no joints whatsoever no matter how large the surface of your floor. The optimized crack control and high impact resistance of the Dramix® 4D series in combination with mesh ensures the surface of your

seamless floors remains intact even with intensive usage, reducing maintenance and repair costs, and boosting your productivity.

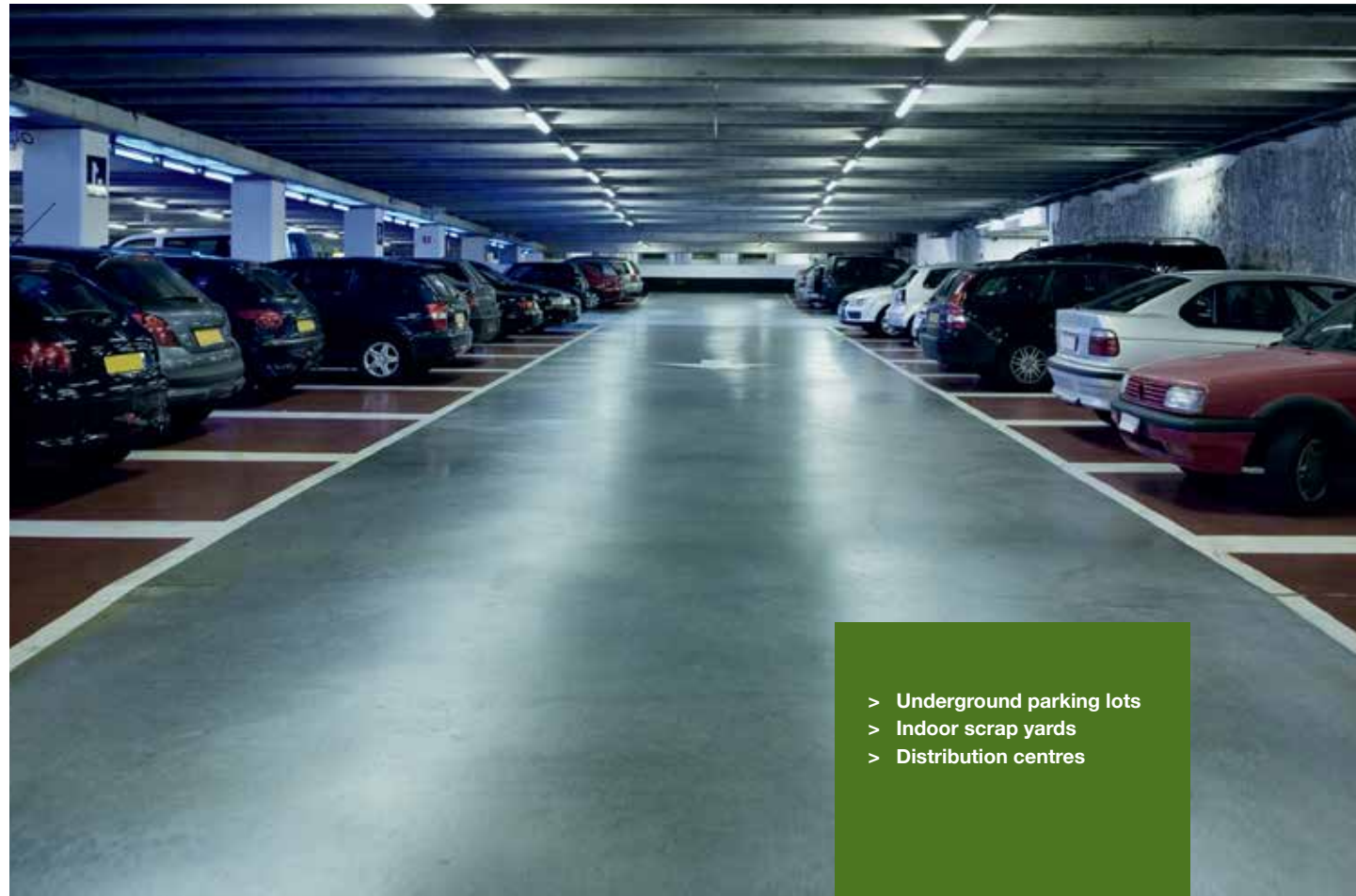
#### For the highest hygienic and environmental requirements

The Dramix® 4D series has been specifically designed to affect cracks between 0.004 to 0.012 inches (0.1 to 0.3 mm), enabling you to create durable liquid tight floors that comply with the most stringent hygienic and environmental requirements. These 4D floors of fibers in combination with mesh have been designed in compliance with the relevant European standards (Eurocode 2 and DAfstb Richtlinie (German guidelines)).

They are the perfect solution for the food, chemical, and petrochemical industry.

## Thin jointless (renovation) floors

## Coated floors



- > Underground parking lots
- > Indoor scrap yards
- > Distribution centres



- > Medical and healthcare
- > Chemical industry
- > Food industry
- > Semiconductor industry
- > Underground parking lots

### Cost-efficient renewal of your floors

The Dramix® 4D series provides you with a cost-efficient solution for the renovation of any type of industrial floor. Using steel fibers and top mesh enables you to create a new—and completely joint-free—thin overlay of reinforced concrete in a minimum of time and using a minimum amount of concrete. The excellent crack control and impact resistance of the 4D series ensures that the renovation layer is durable and requires only a minimum of maintenance.

### A supplementary protection

Dramix® 4D floors can also be used as the substrate for hard thin toppings such as epoxy layers and other coatings on jointless slabs. Thanks to the optimized crack control of the 4D fibers, liquids or corrosive substances are prevented from infiltrating the epoxy concrete. At the same time, potential damage from concrete cracks to your coatings is reduced to an absolute minimum. The 4D series is also the ideal solution in combination with mesh.



- > Harbor pavement
- > Airport pavement
- > Outdoor scrap yards

Port of Barcelona, Spain  
4D without mesh

### Heavy-duty concrete in any type of environment

The Dramix® 4D series is the ideal solution for dynamic loading: heavy-duty pavement for harbors, airports, and other outdoor industrial activities. Engineered to affect small cracks, the 4D fibers protect the pavement surface from the most severe weather conditions and the damaging effects of seawater or chemical substances.

High impact resistance results in a surface free of spalling effects, ensuring safe and efficient operations, and preventing damage to machinery and containers. Because of their ease-of-use during construction, 4D pavement also represents a cost-efficient solution when compared to traditional paving methods.

# 5D<sup>®</sup> Dramix<sup>®</sup>D



## Designed for:

- > Industrial floors on piles
- > Industrial mat slabs
- > Rack supported building foundations and seismic floors

## Structural floors

# 5D<sup>®</sup> Dramix<sup>®</sup>D

### The high demands of structural floors

Industrial floors are usually ground-supported and completely separated from the actual structure of the building. However, this design principle cannot be applied in some situations.

- > **Poor soil conditions** often necessitate the use of pile-supported floors. Without the support of the soil, the load-bearing capacity of the floor slab needs to be much higher. Even though pile-supported floors are usually separated from the building, they must be designed to meet the structural requirements.

- > **In seismic areas**, floors often function as a tie beam for structural elements, such as columns and pad foundations. Significant upward forces, originating from the horizontal movement of the racks during a seismic event, have to be accounted for.

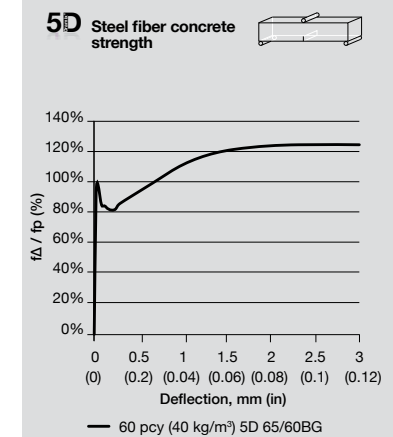
- > **Modern warehouses and industrial facilities** increasingly use floors that also act as the superstructure's foundation system or are at least an integral part of the foundation. These structural floors not only have to withstand all loads from the regular operations but also from the building itself. The weight of the building, along with snow and wind loads, has to be safely transmitted into the ground. Resistance to seismic loads is an additional but critical requirement.

Naturally, the design and the execution of these floors need to comply with the most stringent requirements.

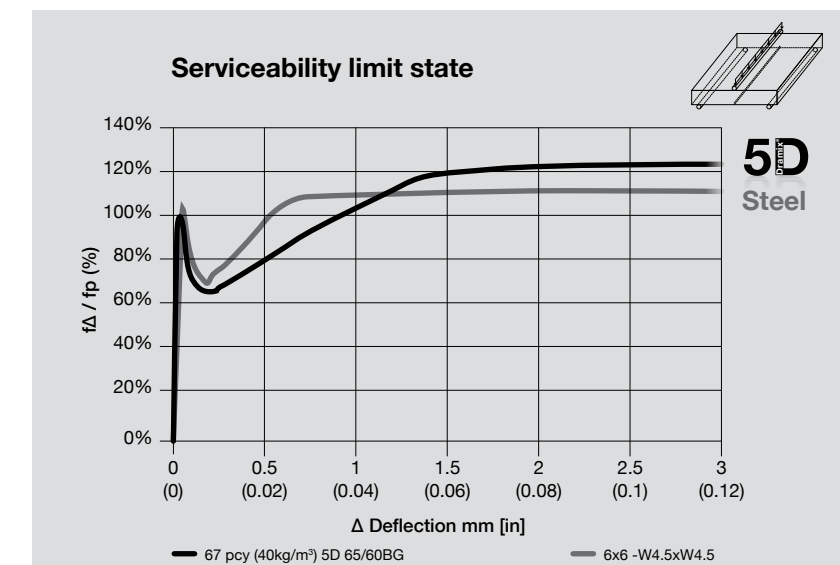
@ BEKAERT

### The ultimate in load bearing capacity

The Dramix<sup>®</sup> 5D series has been developed with the demands of structural floors in mind. Because of their unique features and capabilities, the 5D fibers offer a load-bearing capacity never before seen in steel fiber reinforcement, enabling fiber-only solutions for structural floors. In extremely demanding environments, the 5D fibers can be combined with (local) traditional reinforcement methods.



The Dramix<sup>®</sup> 5D series offers the ultimate in load-bearing capacity and outperforms any steel fiber on the market today.



Dramix<sup>®</sup> 5D fibers offer a comparable load bearing capacity to structural reinforcement at a lower cost.

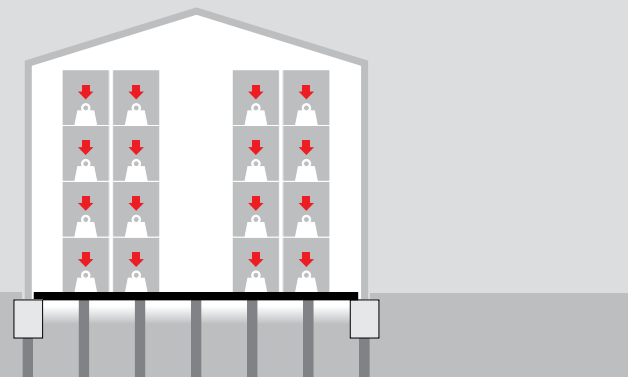
## Industrial floors on piles

# 5D<sup>®</sup> Dramix



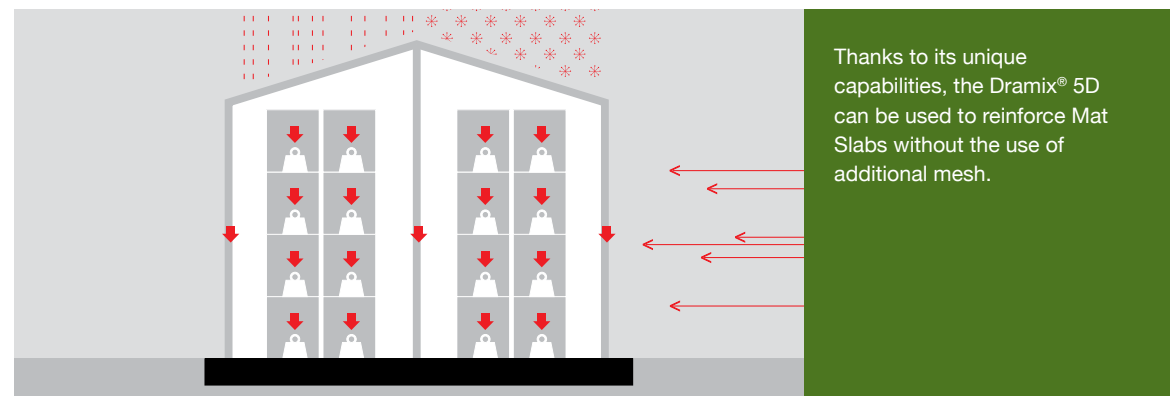
- > Warehouses
- > Production areas
- > Shopping malls
- > Distribution centers

The Dramix® 5D series enables the construction of floors on piles without the use of mesh or any other traditional reinforcement method.



### The fiber-only solution for structural floors

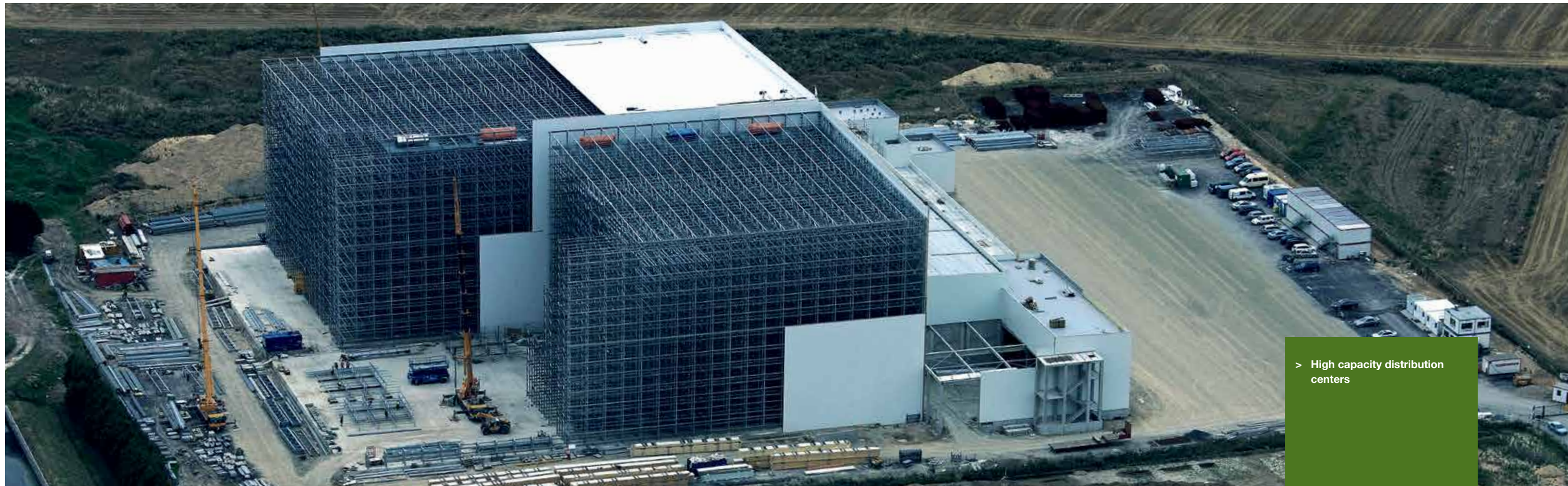
Because of its exceptional load-bearing capacities, Dramix® 5D steel fibers enable the construction of floors on piles—fully independent from the structure—without or with a minimum use of mesh or other traditional reinforcement. This not only saves time during construction, but also creates new possibilities and new applications for floors on piles.



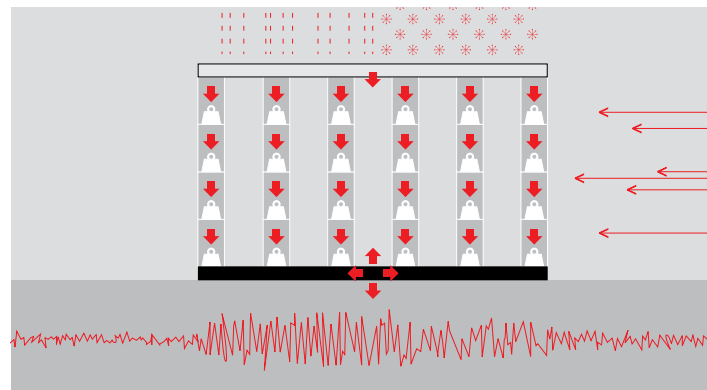
### The fiber-only solution for Mat Slabs

The Dramix® 5D steel fibers have been designed with structural applications in mind. Its unique and outstanding performance in concrete makes it the perfect fiber-only solution for industrial floors that—unlike traditional floors—also act as the foundation of the building structure itself.

The 5D series not only enables you to create extremely strong and durable foundation slabs, but also enables you to save time during construction since mesh is no longer needed. This is especially convenient when constructing mat slabs in more challenging circumstances and environments.



> High capacity distribution centers



The Dramix® 5D series has been designed to withstand the downward, uplift, and even the seismic forces rack supported buildings are subjected to.

### Concrete floors for high-tech warehouses

The Dramix® 5D series offers you the ideal solution for the reinforcement of rack supported buildings. This can be in combination with or even without the use of mesh or any other traditional reinforcement methods. Because of its unique capabilities, the 5D series provides the required strength and durability to preserve

the integrity of the rack supported structure from downward, uplift from wind-loads, and even seismic forces.



## Reinforcing your knowledge



### Pushing the boundaries—together

The Dramix® steel fibers open up a whole new world of possibilities for concrete floor applications. However, with new applications come new challenges. Whatever your project, our knowledge and expertise is only a click or a phone call away. From online calculation tools to on-site consultancy, we are here to help you push the boundaries !

### Our design and calculation services

- > **DraPro:**  
Become a member of Dramix® club and use our online calculation tool.
- > **Support:**  
We help you determine the most suitable fiber types, calculate optimal dosages, select the right concrete quality, and/or advise you on the best usage.
- > **Integrated full service:**  
We can guide you step by step through your structural applications or projects.

All our calculation tools and methods comply with international standards.



Register now ! <http://dramixclub.bekaert.com>





# Reinforcing your world

Bekaert provides building professionals around the world with innovative, high-performance, and durable reinforcement systems. Our aim is to answer the needs of the modern world of building, a world in which speed, cost-efficiency, safety, and sustainability are critical.

## LATIN AMERICA

**Brazil:**  
Belgo Bekaert Arames Ltda  
+55 19 3865 8822  
infobuilding@bekaert.com

**Caribbean:**  
Bekaert Trade Latin America  
+1 305 463 8979  
infobuilding@bekaert.com

**Chile:**  
Prodalam S.A.  
+56 2 26851079  
infobuilding@bekaert.com

**Colombia:**  
Productora de Alambres  
Colombianos Proalco S.A.  
+57 315 412 9367  
infobuilding@bekaert.com

**Ecuador:**  
Ideal Alambrec S.A.  
+593 2 334 20 56  
infobuilding@bekaert.com

**Mexico, Costa Rica,  
Guatemala, Panama,  
El Salvador, Nicaragua, Cuba,  
Belize:**  
Bekaert Trade Mexico  
+52 55 53229601  
infobuilding@bekaert.com

**Peru, Bolivia:**  
Prodac S.A.  
+51 1 613 6666  
infobuilding@bekaert.com

**Venezuela:**  
Vicson S.A.  
+58 241 813 9000  
infobuilding@bekaert.com

## NORTH AMERICA

**US, Canada:**  
Bekaert Corporation  
+1 800 372 6940  
infobuilding@bekaert.com

## EUROPE

**Albania, Bosnia and  
Herzegovina, Bulgaria,  
Greece, Hungary, Croatia,  
Macedonia, Moldavia,  
Romania, Serbia-Montenegro,  
Slovenia:**  
Bekaert GmbH  
+49 6081 44561 137  
infobuilding@bekaert.com

**Austria:**  
Bekaert Gesellschaft m.b.H.  
+43 2236 45180  
infobuilding@bekaert.com

**Belgium, Luxembourg,  
The Netherlands:**  
NV Bekaert SA  
+32 56 76 72 92  
infobuilding@bekaert.com

**Czech Republic:**  
Bekaert Petrovice s.r.o.  
+42 59 6392138  
infobuilding@bekaert.com

## EUROPE

**Denmark:**  
Bekaert A/S  
+45 7020 9618  
infobuilding@bekaert.com

**France:**  
Bekaert France S.A.S.  
+33 1 40 96 26 26  
infobuilding@bekaert.com

**Germany:**  
Bekaert GmbH  
+49 6081 44561 137  
infobuilding@bekaert.com

**Great Britain, Ireland:**  
Bekaert Limited  
+44 1142 427 480  
infobuilding@bekaert.com

**Italy:**  
Leon Bekaert S.p.A.  
+39 02 48 48 11  
infobuilding@bekaert.com

**Norway, Iceland:**  
Bekaert Norway A/S  
+47 638 24 808  
infobuilding@bekaert.com

**Slovak Republic:**  
Bekaert Hlohovec a.s.  
+42 59 6392138  
infobuilding@bekaert.com

## AFRICA

NV Bekaert SA  
+ 32 56 76 69 86  
infobuilding@bekaert.com

## Always close to you

Bekaert Building Products has production plants and sales offices all over the world. This means you can always count on fast delivery, extensive support, and professional advice. Anytime, anywhere.

## EUROPE

**Poland:**  
Bekaert Sp. z.o.o.  
+48 22 851 41 63  
infobuilding@bekaert.com

**Spain, Portugal:**  
Industrias del Ubierna, S.A.  
+34 93 241 90 00  
infobuilding@bekaert.com

**Sweden, Baltics, Finland:**  
Bekaert Svenska AB  
+46 31 704 16 40  
infobuilding@bekaert.com

**Switzerland:**  
Bekaert (Schweiz) AG  
+41 56 203 60 40  
infobuilding@bekaert.com

## NEAR EAST

**Israel:**  
Bekaert GmbH  
+49 6081 44561 137  
infobuilding@bekaert.com

## MIDDLE EAST

**Gulf States:**  
Bekaert Middle East, LLC  
+971 4 345 4571  
infobuilding@bekaert.com

**Turkey, Azerbaijan, Iran,  
Turkmenistan, Uzbekistan:**  
Bekaert Izmit  
+90 262 316 8591  
infobuilding@bekaert.com

## RUSSIA

**Russia, Belarus,  
Kazakhstan, Ukraine:**  
Bekaert Wire o.o.o.  
+7 499 929 01 38  
infobuilding@bekaert.com

## ASIA

**Bangladesh, Bhutan, India,  
Nepal, Sri Lanka:**  
Bekaert Industries Pvt. Ltd.  
+91 996 705 3989  
infobuilding@bekaert.com

**China, Mongolia:**  
Shangai Bekaert- Ergang  
Company Limited  
+86 21 5046 06 10  
infobuilding@bekaert.com

**Indonesia:**  
Bekaert Industries Pte  
+62 267 440 288  
infobuilding@bekaert.com

**Singapore, Cambodia, Hong  
Kong, Japan, Korea, Laos,  
Malaysia, Myanmar,  
Philippines, Taiwan,  
Thailand, Vietnam:**  
Bekaert Singapore Pte Ltd  
+65(0)97859171  
infobuilding@bekaert.com

## AUSTRALIA

**Oceania:**  
Bosfa Pty Ltd  
+61 8 9451 7533  
infobuilding@bekaert.com

## Belgium Headquarters:

NV Bekaert SA  
+32 56 76 61 10  
infobuilding@bekaert.com  
<http://dramix.bekaert.com>

Bekaert ([www.bekaert.com](http://www.bekaert.com)) is a world market and technology leader in advanced solutions based on steel wire transformation and coatings.

Bekaert (Euronext Brussels: BEKB) was established in 1880 and is a global company with headquarters in Belgium, employing more than 25 000 people worldwide. Serving customers in 120 countries, Bekaert pursues sustainable profitable growth in all its activities.