

Quality Control

Why do we carry out a quality control?

This control consists of checking whether the coating meets the customer's requirements with regard to layer thickness, adhesion etc., but particularly whether the coating is made in accordance with the quality criteria which we have determined.

How is this quality control carried out?

Every batch of parts is characterized and controlled by means of a test part or a sample, put ready in the load, in a way that is representative for the other parts (condition of the surface, position in the reactor).

The characterization and the follow-up tests of the production are completed within our company, thanks to the control equipment that has been the object of a special study. This study has been carried out in order to satisfy all our customers' requirements.

Every batch of parts is followed from reception to shipment. The traceability is assured by creation of a route card and batch record for each batch of parts coated.

Our quality control tests



Adherence test (Scratch Test)

- Scratch by means of a diamond point under constant load.
- Determination of the breaking load (L_c and N).



Adherence test (Indentation - Durometer)

- Competence of deformation under a very strong load.
- Determination of the adherence substrate-deposit.



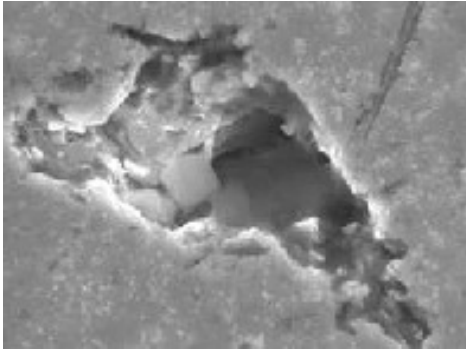
Resistance against abrasive wear test

- Creation of a trace by means of a tungsten carbide disc.
- Determination of the degree of wear.



Calotest: thickness measurement

- Creation of a calot by means of placing a ball on the sample or the part in order to measure the thickness of the different layers of the deposit.
- Determination of the thickness of the deposit and its different lower layers + cohesion between the different layers.



Observation of the microstructure of the deposit (M.E.B.)

Morphologic expertise and elementary analysis.

Please [contact us](#) if you would like to receive more information on our quality control and our quality control tests.