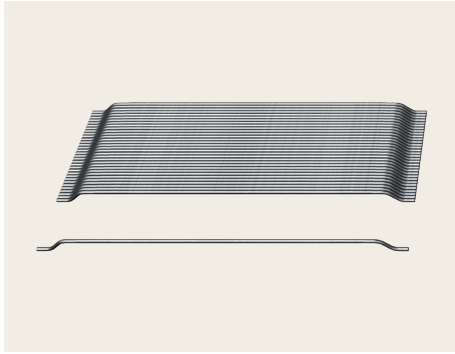


Dramix[®] 3D

65/60BG

Aspect ratio Length Bright Glued

Concrete Reinforcement



Original anchorage

Dramix[®] 3D is the cost-efficient fiber for standard statically indeterminate concrete structures that are subjected to regular static, fatigue and dynamic loadings.

Glue technology for three-dimensional reinforcement

Dramix[®] steel fibers are bundled with water-soluble glue. The glue helps to avoid fiber balling during mixing and ensures a homogeneous distribution of fibers throughout the concrete mix.

Material properties

Nom. tensile strength:

168 ksi (1,160 MPa)

Young's modulus:

30,458 ksi (210,000 MPa)

Strain at ultimate strength:

0.8 %

Fiber network

1,477 fibers/lb (3,257 fibers/kg)

Geometry

Fiber family



Length (l) * / Diameter (d)

← 2.4 in. (60 mm) →



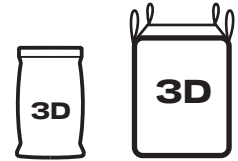
Aspect ratio (l/d) * : 65

* Indicative value

Packaging

BAGS:

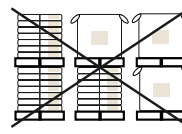
22 / 44 lb
(10 / 20 kg)



BIG BAG:

2,425 - 2,645 lb
(1,100 - 1,200 kg)

Handling



NO STACKING



KEEP DRY

Product certificates*



System certificates*

Dramix[®] plants are ISO 9001 and ISO 14001 certified.



Product conformity

Dramix[®] conforms to ASTM A820, EN 14889-1 and ISO 13270 Class A.

Contact us:

For inquiries and orders on www.construction.bekaert.com/contact



For recommendations on stacking, handling, dosing and mixing, visit www.bekaert.com/dosingfibers

Any other specific document or certificate can be found on www.construction.bekaert.com/resources

* Product and system certificates are plant specific.