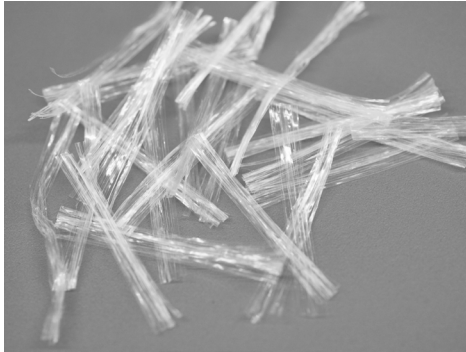


# Synmix<sup>®</sup> Core38

## Concrete reinforcement



Synmix<sup>®</sup> Core38 synthetic fibers are fibrillated monofilament tape fibers, manufactured from 100% virgin polypropylene. Synmix<sup>®</sup> fibers are designed specifically to reinforce concrete applications and are alkali resistant, non-absorptive and completely non-corrosive. The fibers provide improved crack control, durability and post crack flexural performance.

Fibrillated tape longitudinally embossed, for enhanced crack control.

### Characteristics Material properties

Declared Nominal values:

Tensile Strength  
65 ksi (450 MPa)

Young's modulus  
2,277 ksi (15.7 GPa)

Specific gravity  
0,91

Melting point  
329 °F (167 °C)

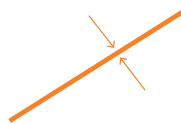
Ignition point  
≥ 626 °F (≥ 330 °C)

### Fiber properties

Length  
1.4961 in. (38 mm)



Equivalent Diameter  
0.0165 in. (0.42 mm)



Fiber shape  
fibrillated tape longitudinally embossed

Fibers / weight (approx.)  
94,736/lb (208,855/kg)

### Packing

weight /bag  
4 lb (1.81 kg)

bags / box  
6

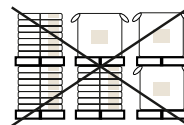
boxes / pallet:  
48

weight / pallet:  
1,152 lb (522 kg)



Fibers are packed in waterdegradable paper bags.

### Handling



NO STACKING



KEEP DRY

### Product Conformity

Synmix<sup>®</sup> conforms to ASTM Designation C1116 and D7508

### System Certificates

ISO 9001 certified.

### CONTACT US:

For inquiries and orders on <https://construction.bekaert.com/contact>



For recommendations on stacking, handling, dosing and mixing, visit [www.bekaert.com/dosingfibers](http://www.bekaert.com/dosingfibers)

Any other specific document or certificate can be found on <https://Construction.bekaert.com/resources>